

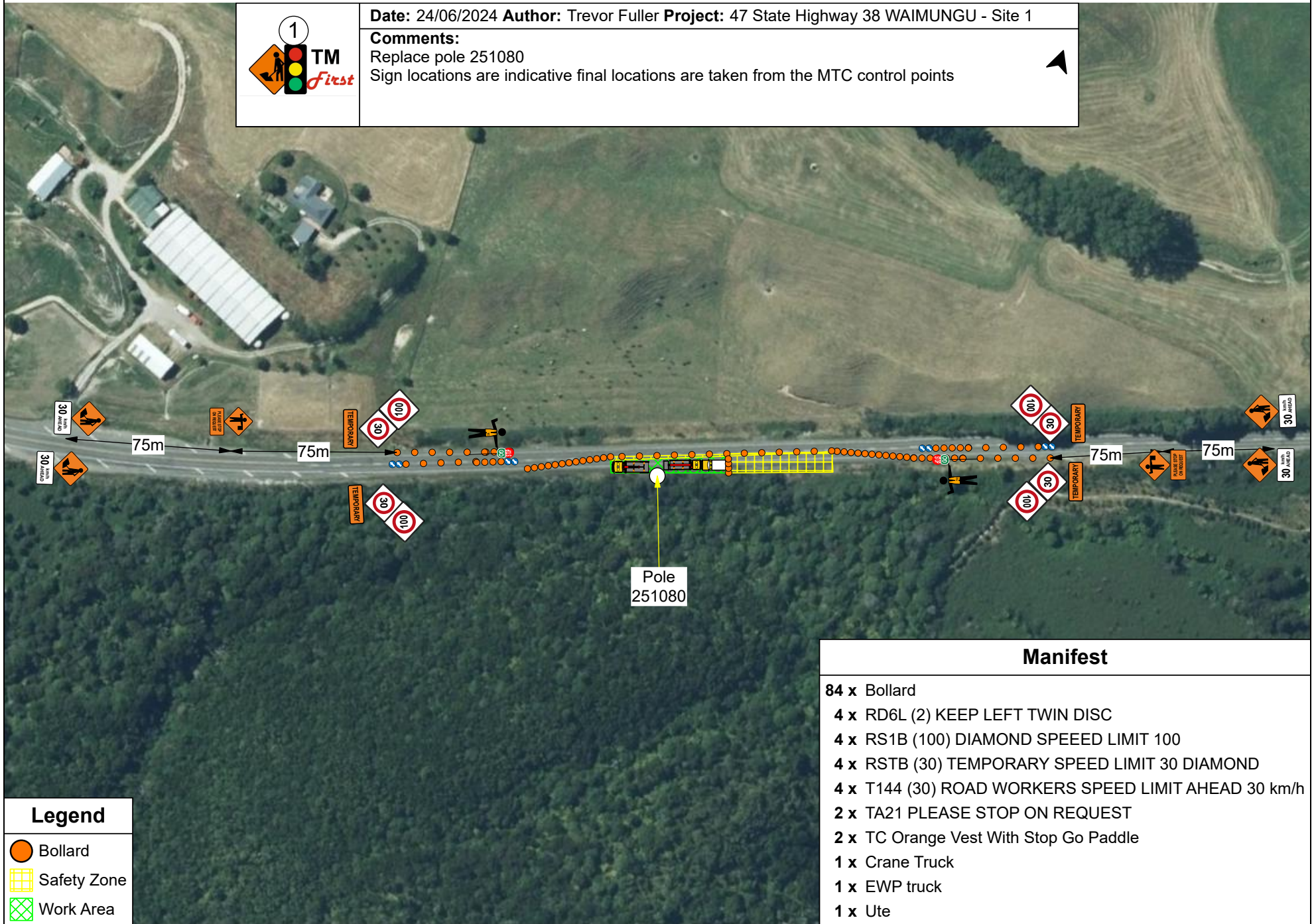


Date: 24/06/2024 **Author:** Trevor Fuller **Project:** 47 State Highway 38 WAIMUNGU - Site 1

Comments:

Replace pole 251080

Sign locations are indicative final locations are taken from the MTC control points



Legend

- Bollard
- Safety Zone
- Work Area

Manifest

- 84 x Bollard
- 4 x RD6L (2) KEEP LEFT TWIN DISC
- 4 x RS1B (100) DIAMOND SPEED LIMIT 100
- 4 x RSTB (30) TEMPORARY SPEED LIMIT 30 DIAMOND
- 4 x T144 (30) ROAD WORKERS SPEED LIMIT AHEAD 30 km/h
- 2 x TA21 PLEASE STOP ON REQUEST
- 2 x TC Orange Vest With Stop Go Paddle
- 1 x Crane Truck
- 1 x EWP truck
- 1 x Ute